

## AP2360 48-Port Analog VoIP Gateway



VoiceFinder AP2360 is a new cutting edge analog VoIP gateway supporting maximum 48 ports of analog voice interface. Analog interface of AP2360 provide an optimized call scenario when it interoperates with conventional PBX. Compact cost effective design and system architecture of AP2360 provides customer satisfaction in high quality, performance and system reliance. VoIP gateway combining IP-PBX is now suggesting a new model for a main voice communication solution. In order to be a part of advanced VoIP communications naturally in the future, making an excellent choice of choosing VoIP gateway is essential. VoiceFinder AP2360 is a multi-Port VoIP gateway providing total 48 analog interface ports, and so on. It is suitable for general enterprises, large and public offices. It has functions as a media gateway which inter-operates with IP-PBX and it enables to replace mid and large size analog PBX. Especially AP2360 provides an optimal

solution of VoIP communications in telephony environments that using telephone lines and PBX to get connect with a head office. AP2360 is designed to provide high-performance service as a media gateway. It provides module type CPU interface board that has LEDs on the front panel indicating operational status, and LAN Interface status of VoIP gateway. Two 10/100Mbps Fast Ethernet port and RS232C console interface are the base for delivering various network services such as LAN-to-LAN routing, Bridge and NAT/PAT service etc. Various VoIP gateway series of AddPac is approved for its high performance and reliability in world wide markets. AddPac provides highly advanced VoIP services in order to meet demanding and evolving business requirements of customers. Especially AP2360 has been developed through years of experiences and accumulated know-how from existing enterprises and communication markets. AP2360 provides concurrent triple stack such as H323, SIP and QoS (Quality of Service) for high quality of communication service. This will satisfy customers with high expectation.

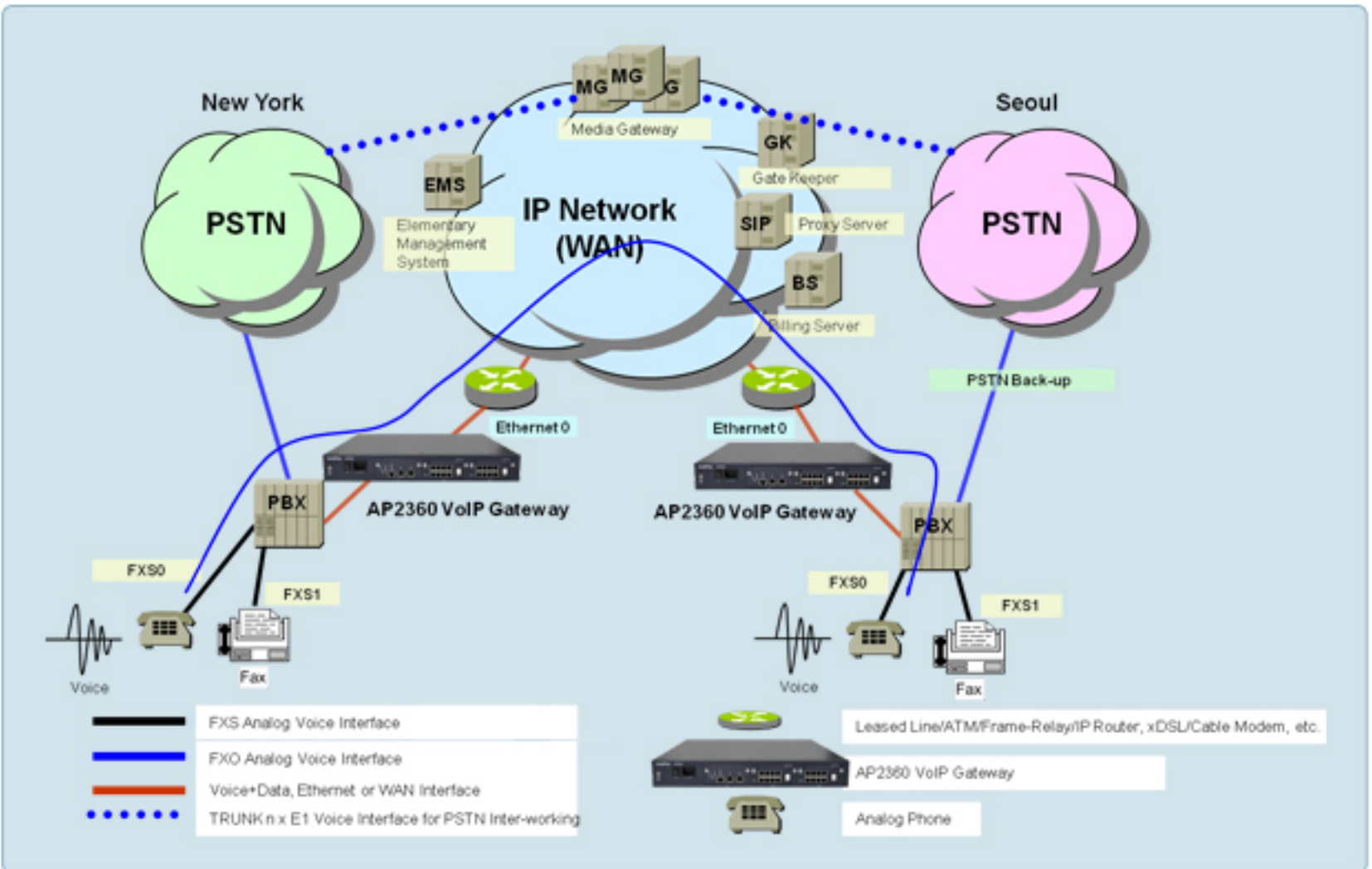
## Major Feature

### Overall Features

- › 48-Port Analog VoIP Gateway Solution
- › H.323/SIP/MGCP Triple Concurrent Stack Embedded
- › High Performance RISC & Programmable DSP Architecture
- › Two(2) 10/100Mbps Fast Ethernet (IP Share ,etc)
- › High Performance LAN-to-LAN Routing Capability
- › G.711/G.726/G.723/G.729, T.38 Fax , VAD, etc
- › Powerful Network Protocols (PPPoE, DHCP, Static Routing, etc)
- › Firmware Upgradeable Architecture
- › Smart NMS (Network Management System) for Large Scale Deployment
- › Advanced Voice QoS Mechanism
- › Compact Design with Internal Power Supply
- › Six(6) VoIP Module Slots : 8-Port VoIP Module (FXS, FXO, etc)
- › One(1) CPU Module Slot



## Network Diagram



## Youtube



48-Port Analog VoIP Gateway  
AP2360

### AddPac Technology Co.,Ltd.

AddPac Texhnology (Korea-Head Office)  
 Phone +8225683848  
 Email sales@addpac.com